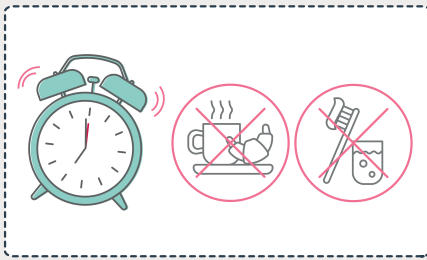
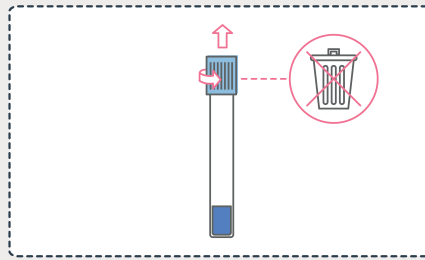


# SCREENING TESTS SARS-COV-2

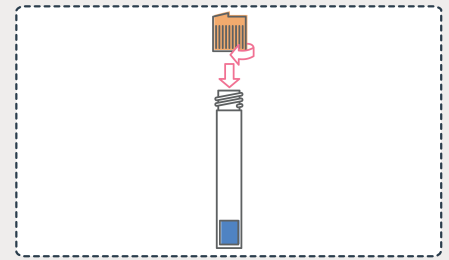
## INSTRUCTIONS FOR USE



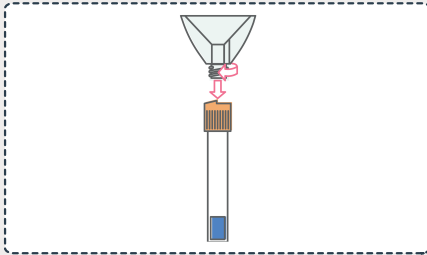
**1** Sample must be taken in the morning. Do not eat, do not drink and do not brush teeth before sampling.



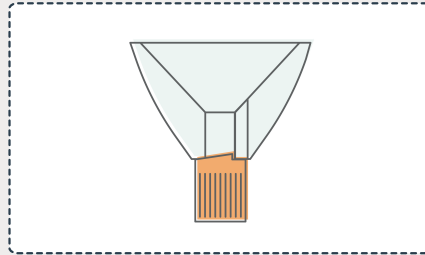
**2** Remove the elements from the packaging. Remove the blue cap of the tube, making sure to keep the tube straight.



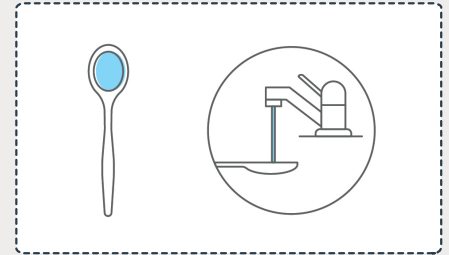
**3** Screw the orange adapter onto the sample tube, making sure that the notch on the adapter is pointing up.



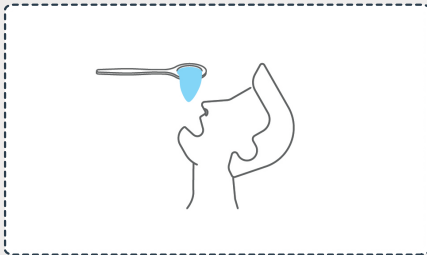
**4** Screw completely the funnel onto the adapter.



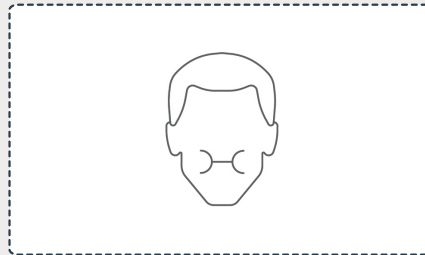
**5** Make sure the funnel is in the correct position: the notch on the orange adaptor has to be against the stop notch of the funnel.



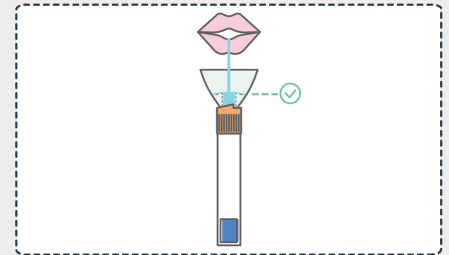
**6** Fill a teaspoon with water.



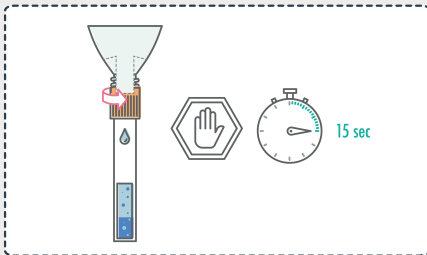
**7** Put the water in your mouth.



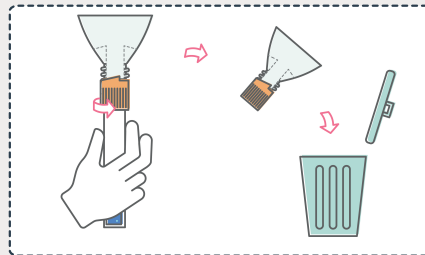
**8** Stir the water inside the mouth so as to collect as much saliva and virus as possible, if the virus is present. Do not drink the water.



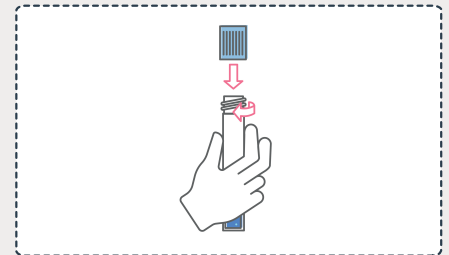
**9** Pour the saliva-water mixture into the funnel until the centre of the funnel is completely filled and the excess falls into the overflow.



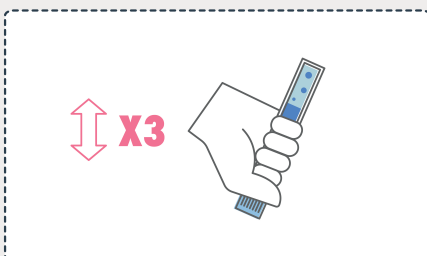
**10** Partially unscrew the funnel so that the saliva flows into the sample tube for at least 15 seconds.



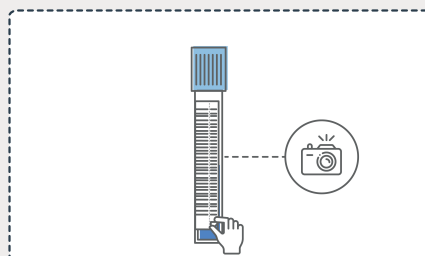
**11** Hold the tube straight and unscrew the orange adapter and funnel and throw them into a closed waste garbage.



**12** Screw completely the blue cap on the tube.



**13** Mix saliva and reagent by inverting the tube up and down 3 times.



**14** Remove the detachable part of the self-adhesive label from the barcode by lifting the blackened corner and keep it\* for future reference of the test result. If possible, store the tube in an airtight container or closed pouch. Return the tube to the collection point on the same day.

\*Suggestion: Take a picture of the label.